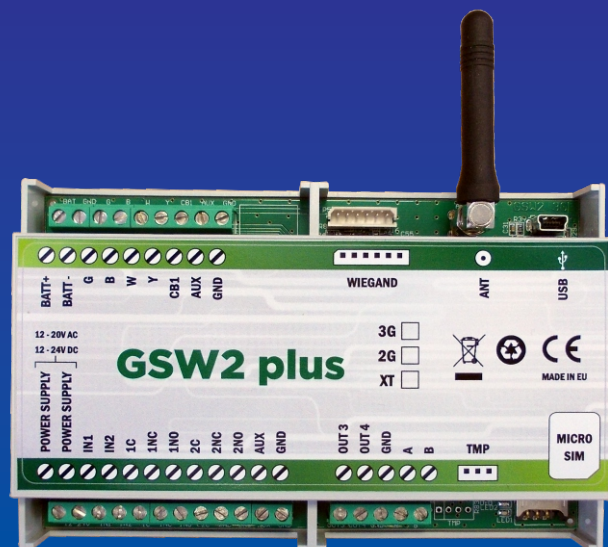


# GSW2 PLUS

## GSM/GPRS or 3G/UMTS communication device

**GSW2 PLUS** is an advanced GSM communication device that can be programmed with up to **1000 phone numbers (200 in standard version)**. It provides secure wireless remote control of equipment and systems to the users. When the user, who is on the list, calls the nominated phone number of the **GSW2 PLUS** device, it recognizes the user's phone number and opens the gates. The device allows the master users to add and delete individual users from the system via Web server, Smartphone apps, USB connection to PC or with a simple text message (SMS). **GSW2 PLUS** also has the possibility to connect door phone unit for GSM intercom application, temperature probe, backup battery, RF module or any Wiegand operated access control unit, like different types of proximity card readers and access entry keypads. **GSW2 PLUS** supports up to **1000 access codes (PIN)** and up to **50 temporary access codes (SPIN)**.

**GSW2 PLUS** is ideal for a wide range of security applications. It can operate with gates, barriers, shutters, garage doors and entry doors remotely and securely using the Caller ID - without any call costs. It is suitable for residences, condominiums, hospitals, hotels and factories.



### Features

- Set up all features with Web server, with EasySet SW on your PC, with Smartphone apps or with using a unique SMS programming.
- Up to 1000 users (200 in standard ver.) can open an entrance with a free call by Caller ID
- 20.000 Event log entries with timestamps – find out who accessed by phone and when
- Wiegand 26/72 input & output and other optional features like RF module, temp. sensor, ...
- NEW F-OTA function - Upgrade FW of the device Over The Air



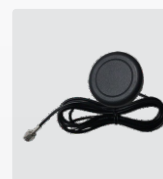
### Technical Specifications

Power Supply	12,0V - 20,0V AC or 12,0V - 24,0V DC
Current consumption - transmitting mode	250mA
Current consumption - idle mode	40mA
Built-in 4 (2G) or 5 (3G) band GSM module	850/900/1800/1900 MHz
PCB dimensions	138 × 85 mm
Unit dimensions	143 × 90 × 33 mm
Built-in Antenna SMA	1
Weight	280g
GSM/GPRS or 3G/UMTS options available	YES

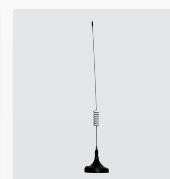
### Accessories



Ext. power supply  
100 - 230V AC/  
15V DC



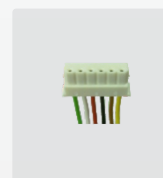
Outdoor GSM  
antivandal antenna



External antenna  
(cabel lenght 3 m)



Door Phone unit

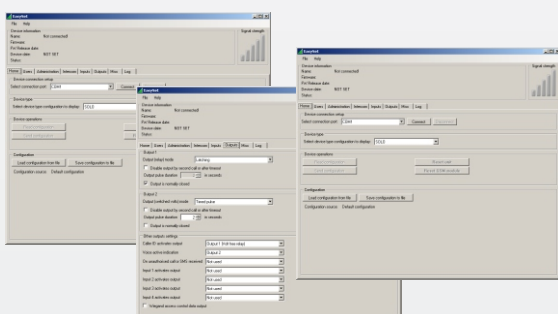


Wiegand connector  
with 30 cm cables



Backup battery  
12V / 1,2Ah

### EASYSET - Programming SW for PC, Android or IOS phone



## Mars Commerce

Mars Commerce d.o.o.  
Ulica Mirka Vadnova 19, SI 4000 Kranj, Slovenija  
ph: + 386 4 280 74 00, fax: + 386 4 234 08 81  
www.mars-commerce.com  
email: sales@mars-commerce.com